
Product Datasheet

E-Cadherin Antibody / CDH1 (orb606394)

Description

Cadherins behave as both receptors and ligands for


Species/Host

Rabbit

Reactivity

Human

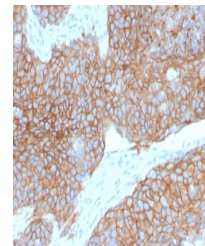
Conjugation

Unconjugated

Tested Applications

FACS, IF, IHC-P, WB

Immunofluorescent staining of human MCF7...


Immunogen

Recombinant human protein was used as the immunogen for the recombinant E-Cadherin antibody.

Preservatives

0.2 mg/ml in 1X PBS with 0.1 mg/ml rAlbumin (US sourced) and 0.05% sodium azide

Storage

Store the recombinant E-Cadherin antibody at 2-8°C (with azide) or aliquot and store at -20°C or colder (without azide).

Note

For research use only

Formalin-fixed, paraffin-embedded human ...

Application notes

Optimal dilution of the recombinant E-Cadherin antibody should be determined by the researcher.1. The prediluted format is supplied in a dropper bottle and is optimized for use in IHC. After epitope retrieval step (if required), drip mAb solution onto the tissue section and incubate at RT for 30 min.



Western blot testing of human MCF-7 cell...

Formula

0.2 mg/ml in 1X PBS with 0.1 mg/ml BSA (US sourced) and 0.05% sodium azide

Isotype

Rabbit IgG, kappa

Clonality

Recombinant

Purity

Protein A affinity chromatography

Uniprot ID

P12830

Hazard Information

This recombinant E-Cadherin antibody is available for research use only.

Dilution Range

Flow cytometry: 1-2ug/million cells, Immunofluorescence: 1-2ug/ml, Western blot: 1-2ug/ml, Immunohistochemistry (FFPE): 1-2ug/ml for 30 min at RT

Expiration Date

12 months from date of receipt.