
Product Datasheet

E-Cadherin Antibody / CDH1 (orb606393)

Description

Recognizes a protein of 80-120kDa, identified as E-

Species/Host

Mouse

Reactivity

Human

Conjugation

Unconjugated

Tested Applications

IF, IHC-P, WB

Immunogen

A full length recombinant human protein was used as the immunogen for the recombinant E-Cadherin antibody.

Preservatives

0.2 mg/ml in 1X PBS with 0.1 mg/ml rAlbumin (US sourced) and 0.05% sodium azide

Storage

Store the recombinant E-Cadherin antibody at 2-8°C (with azide) or aliquot and store at -20°C or colder (without azide).

Note

For research use only

Application notes

Optimal dilution of the recombinant E-Cadherin antibody should be determined by the researcher.1. The prediluted format is supplied in a dropper bottle and is optimized for use in IHC. After epitope retrieval step (if required), drip mAb solution onto the tissue section and incubate at RT for 30 min.

Formula

0.2 mg/ml in 1X PBS with 0.1 mg/ml BSA (US sourced) and 0.05% sodium azide

Isotype

Mouse IgG1, kappa

Clonality

Recombinant

Purity

Protein G affinity chromatography

Uniprot ID

P12830

Hazard Information

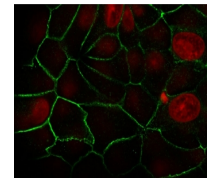
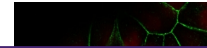
This recombinant E-Cadherin antibody is available for research use only.

Dilution Range

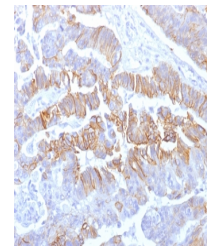
Western blot: 1-2ug/ml, Immunofluorescence: 1-2ug/ml, Immunohistochemistry (FFPE): 1-2ug/ml for 30 min at RT

Expiration Date

12 months from date of receipt.



Immunofluorescent staining of human MCF7...



IHC testing of formalin-fixed, paraffin-...



Western blot testing of human MCF-7 cell...