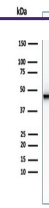

Product Datasheet

KRT8 Antibody / Cytokeratin 8 (orb606391)

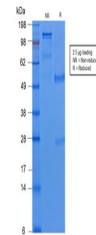
Description

Cytokeratin 8 (CK8) belongs to the type II (or B or

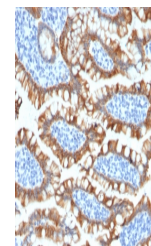
Species/Host	Rabbit
Reactivity	Human
Conjugation	Unconjugated
Tested Applications	IHC-P, WB
Immunogen	A cytoskeletal preparation from human HeLa cells was used as the immunogen for this recombinant Cytokeratin 8 antibody.
Preservatives	0.2 mg/ml in 1X PBS with 0.1 mg/ml rAlbumin (US sourced) and 0.05% sodium azide
Storage	Store the recombinant Cytokeratin 8 antibody at 2-8°C (with azide) or aliquot and store at -20°C or colder (without azide).
Note	For research use only
Application notes	The concentration stated for each application is a general starting point. Variations in protocols, secondaries and substrates may require the recombinant Cytokeratin 8 antibody to be titrated up or down for optimal performance.1. The prediluted format is supplied in a dropper bottle and is optimized for use in IHC. After epitope retrieval step (if required), drip mAb solution onto the tissue section and incubate at RT for 30 min.
Formula	0.2 mg/ml in 1X PBS with 0.1 mg/ml BSA (US sourced) and 0.05% sodium azide
Isotype	Rabbit IgG, kappa
Clonality	Recombinant
Purity	Protein A affinity chromatography
Uniprot ID	P05787
Hazard Information	This recombinant Cytokeratin 8 antibody is available for research use only.
Dilution Range	Immunohistochemistry (FFPE): 0.5-1ug/ml for 30 min at RT,Western blot: 1-2ug/ml
Expiration Date	12 months from date of receipt.



Western blot testing of human HCT-116 ce...



SDS-PAGE analysis of purified, BSA-free ...



IHC testing of FFPE human small intestine...