

---

## Product Datasheet

### HCG-beta Antibody (orb606390)

**Description**

This antibody reacts with a protein of 22kDa, identified as


**Species/Host**

Mouse

**Reactivity**

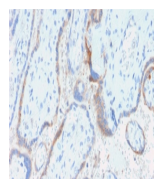
Human

**Conjugation**

Unconjugated

**Tested Applications**

IHC-P



IHC testing of FFPE human placenta with

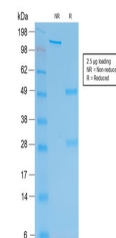
...

**Immunogen**

Recombinant protein was used as the immunogen for this recombinant HCG-beta antibody.

**Preservatives**

0.2 mg/ml in 1X PBS with 0.1 mg/ml rAlbumin (US sourced) and 0.05% sodium azide



SDS-PAGE analysis of purified, BSA-free ...

**Storage**

Store the recombinant HCG-beta antibody at 2-8°C (with azide) or aliquot and store at -20°C or colder (without azide).

**Note**

For research use only

**Application notes**

The concentration stated for each application is a general starting point. Variations in protocols, secondaries and substrates may require the recombinant HCG-beta antibody to be titered up or down for optimal performance.1. The prediluted format is supplied in a dropper bottle and is optimized for use in IHC. After epitope retrieval step (if required), drip mAb solution onto the tissue section and incubate at RT for 30 min.

**Formula**

0.2 mg/ml in 1X PBS with 0.1 mg/ml BSA (US sourced) and 0.05% sodium azide

**Isotype**

Mouse IgG1, kappa

**Clonality**

Recombinant

**Purity**

Protein G affinity chromatography

**Uniprot ID**

**PODN86**

**Hazard Information**

This recombinant HCG-beta antibody is available for research use only.

**Entrez**

**1082**

**Dilution Range**

Immunohistochemistry (FFPE): 0.5-1ug/ml for 30 min at RT

**Expiration Date**

12 months from date of receipt.