
Product Datasheet

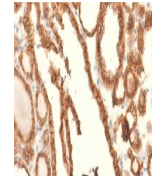
EpCAM Antibody / Extracellular domain (orb606388)

Description

EpCAM is frequently upregulated in carcinomas but is


Species/Host

Rabbit


Reactivity

Canine, Feline, Human

Conjugation

Unconjugated

Tested Applications

IHC-P, WB

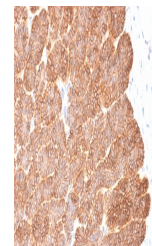
IHC testing of FFPE human thyroid carcin...

Immunogen

A portion of amino acids 100-224 (extracellular domain) was used as the immunogen for the recombinant EpCAM antibody.

Preservatives

0.2 mg/ml in 1X PBS with 0.1 mg/ml rAlbumin (US sourced) and 0.05% sodium azide


Storage

Store the recombinant EpCAM antibody at 2-8°C (with azide) or aliquot and store at -20°C or colder (without azide).

Note

For research use only

IHC testing of FFPE human basal cell car...

Application notes

Titering of the recombinant EpCAM antibody may be required for optimal performance.1. The prediluted format is supplied in a dropper bottle and is optimized for use in IHC. After epitope retrieval step (if required), drip mAb solution onto the tissue section and incubate at RT for 30 min.

Formula

0.2 mg/ml in 1X PBS with 0.1 mg/ml BSA (US sourced) and 0.05% sodium azide


Isotype

Rabbit IgG, kappa

Clonality

Recombinant

Purity

Protein A affinity chromatography

Western blot testing of human MCF7 cell ...

Uniprot ID

[P16422](#)

Hazard Information

This recombinant EpCAM antibody is available for research use only.

Dilution Range

Western blot:1-2ug/ml,Immunohistochemistry (FFPE): 1-2ug/ml for 30 min at RT

Expiration Date

12 months from date of receipt.