
Product Datasheet

Thrombomodulin Antibody / CD141 (orb606386)

Description

It recognizes a protein of 75kDa, identified as

gl...

Species/Host

Mouse

Reactivity

Human

Conjugation

Unconjugated

Tested Applications

ELISA, IHC-P

Immunogen

Human recombinant partial protein corresponding to amino acids 69-194 was used as the immunogen for this recombinant Thrombomodulin antibody.

Preservatives

0.2 mg/ml in 1X PBS with 0.1 mg/ml rAlbumin (US sourced) and 0.05% sodium azide

Storage

Store the recombinant Thrombomodulin antibody at 2-8°C (with azide) or aliquot and store at -20°C or colder (without azide).

Note

For research use only

Application notes

The concentration stated for each application is a general starting point. Variations in protocols, secondaries and substrates may require the recombinant Thrombomodulin antibody to be titrated up or down for optimal performance.1. The prediluted format is supplied in a dropper bottle and is optimized for use in IHC. After epitope retrieval step (if required), drip mAb solution onto the tissue section and incubate at RT for 30 min.

Formula

0.2 mg/ml in 1X PBS with 0.1 mg/ml BSA (US sourced) and 0.05% sodium azide

Isotype

Mouse IgG1, kappa

Clonality

Recombinant

Purity

Protein G affinity chromatography

Uniprot ID

P07204

Hazard Information

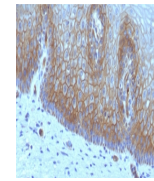
This recombinant Thrombomodulin antibody is available for research use only.

Dilution Range

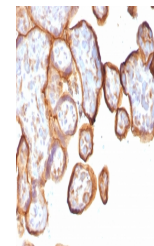
ELISA: 2-4ug/ml (order BSA/azide-free format), Immunohistochemistry (FFPE): 1-2ug/ml for 30 min at RT

Expiration Date

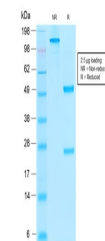
12 months from date of receipt.



IHC testing of FFPE human cervical carci...



IHC testing of FFPE human placenta with ...



SDS-PAGE analysis of purified, BSA-free ...