
Product Datasheet

CD86 Antibody (orb606385)

Description

Recognizes a protein of 70kDa, which is identified as CD86.


Species/Host

Rabbit

Reactivity

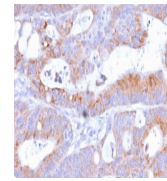
Human, Mouse, Rat

Conjugation

Unconjugated

Tested Applications

ELISA, FACS, IF, IHC-P, WB



IHC testing of FFPE human colon with rec...

Immunogen

Recombinant human full-length protein was used as the immunogen for the recombinant CD86 antibody.

Preservatives

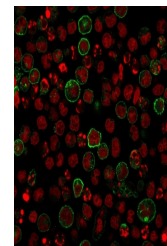
0.2 mg/ml in 1X PBS with 0.1 mg/ml rAlbumin (US sourced) and 0.05% sodium azide

Storage

Store the recombinant CD86 antibody at 2-8°C (with azide) or aliquot and store at -20°C or colder (without azide).

Note

For research use only



IF/ICC staining of human Raji cells with...

Application notes

Optimal dilution of the recombinant CD86 antibody should be determined by the researcher.1. The prediluted format is supplied in a dropper bottle and is optimized for use in IHC. After epitope retrieval step (if required), drip mAb solution onto the tissue section and incubate at RT for 30 min.

Formula

0.2 mg/ml in 1X PBS with 0.1 mg/ml BSA (US sourced) and 0.05% sodium azide

Isotype

Rabbit IgG, kappa

Clonality

Recombinant

Purity

Protein A affinity chromatography

Uniprot ID

P42081



Western blot testing of human Ramos cell...

Hazard Information

This recombinant CD86 antibody is available for research use only.

Dilution Range

ELISA: 2-4ug/ml (order BSA/azide-free format),Flow cytometry: 1-2ug/million cells,Immunofluorescence: 1-2ug/ml,Western blot: 1-2ug/ml,Immunohistochemistry (FFPE): 1-2ug/ml for 30 min at RT

Expiration Date

12 months from date of receipt.