

---

## Product Datasheet

# CFTR Antibody / Cystic Fibrosis Transmembrane Regulator (orb606381)

**Description**

Cystic fibrosis transmembrane conductance

chloride channe...

**Species/Host**

Rabbit

**Reactivity**

Human, Mouse

**Conjugation**

Unconjugated

**Tested**

IHC-P

**Applications**
**Immunogen**

A recombinant human partial protein was used as the immunogen for this recombinant CFTR antibody.

**Preservatives**

0.2 mg/ml in 1X PBS with 0.1 mg/ml rAlbumin (US sourced) and 0.05% sodium azide

**Storage**

Store the recombinant CFTR antibody at 2-8°C (with azide) or aliquot and store at -20°C or colder (without azide).

**Note**

For research use only

**Application notes**

Optimal dilution of the recombinant CFTR antibody should be determined by the researcher. 1. The prediluted format is supplied in a dropper bottle and is optimized for use in IHC. After epitope retrieval step (if required), drip mAb solution onto the tissue section and incubate at RT for 30 min.

**Formula**

0.2 mg/ml in 1X PBS with 0.1 mg/ml BSA (US sourced) and 0.05% sodium azide

**Isotype**

Rabbit IgG, kappa

**Clonality**

Recombinant

**Purity**

Protein A affinity chromatography

**Uniprot ID**
[P13569](#)
**Hazard Information**

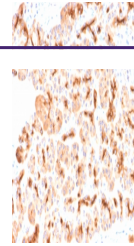
This recombinant CFTR antibody is available for research use only.

**Entrez**
[1080](#)
**Dilution Range**

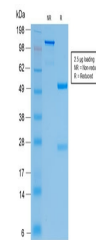
Immunohistochemistry (FFPE): 0.5-1ug/ml for 30 min at RT

**Expiration Date**

12 months from date of receipt.



IHC testing of FFPE human pancreas with ...



SDS-PAGE analysis of purified, BSA-free ...