

## Product Datasheet

### Bcl-2 Antibody (orb606377)

**Description**

This antibody recognizes a protein of 25-26kDa, identified as


**Species/Host**

Rabbit

**Reactivity**

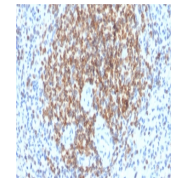
Human

**Conjugation**

Unconjugated

**Tested Applications**

IHC-P, WB



IHC testing of  
FFPE human  
spleen tissue

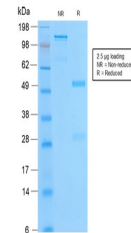
...

**Immunogen**

Recombinant full length human protein was used as the immunogen for this recombinant Bcl-2 antibody.

**Preservatives**

0.2 mg/ml in 1X PBS with 0.1 mg/ml rAlbumin (US sourced) and 0.05% sodium azide



SDS-PAGE  
analysis of  
purified, BSA-  
free ...

**Storage**

Store the recombinant Bcl-2 antibody at 2-8°C (with azide) or aliquot and store at -20°C or colder (without azide).

**Note**

For research use only

**Application notes**

The optimal dilution of the recombinant Bcl-2 antibody for each application should be determined by the researcher.1. The prediluted format is supplied in a dropper bottle and is optimized for use in IHC. After epitope retrieval step (if required), drip mAb solution onto the tissue section and incubate at RT for 30 min.



Western blot  
testing of  
human MCF7  
cell ...

**Formula**

0.2 mg/ml in 1X PBS with 0.1 mg/ml BSA (US sourced) and 0.05% sodium azide

**Isotype**

Rabbit IgG, kappa

**Clonality**

Recombinant

**Purity**

Protein A affinity chromatography

**Uniprot ID**

**P10415**

**Hazard Information**

This recombinant Bcl-2 antibody is available for research use only.

**Dilution Range**

Western blot: 1-2ug/ml, Immunohistochemistry (FFPE): 1-2ug/ml for 30 min at RT

**Expiration Date**

12 months from date of receipt.