

---

## Product Datasheet

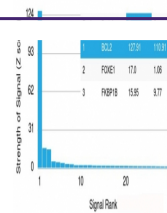
### Bcl-2 Antibody (orb606376)

**Description**

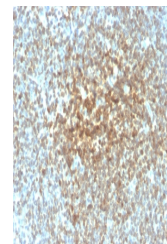
Expression of Bcl-2 alpha oncoprotein inhibits the

<b>Species/Host</b>	Mouse
<b>Reactivity</b>	Human
<b>Conjugation</b>	Unconjugated
<b>Tested Applications</b>	FACS, IF, IHC-P, WB
<b>Immunogen</b>	Recombinant full-length human protein was used as the immunogen for the recombinant Bcl2 antibody.
<b>Preservatives</b>	0.2 mg/ml in 1X PBS with 0.1 mg/ml rAlbumin (US sourced) and 0.05% sodium azide
<b>Storage</b>	Store the recombinant Bcl2 antibody at 2-8°C (with azide) or aliquot and store at -20°C or colder (without azide).
<b>Note</b>	For research use only
<b>Application notes</b>	Optimal dilution of the recombinant Bcl2 antibody should be determined by the researcher.1. The prediluted format is supplied in a dropper bottle and is optimized for use in IHC. After epitope retrieval step (if required), drip mAb solution onto the tissue section and incubate at RT for 30 min.
<b>Formula</b>	0.2 mg/ml in 1X PBS with 0.1 mg/ml BSA (US sourced) and 0.05% sodium azide
<b>Isotype</b>	Mouse IgG1, kappa
<b>Clonality</b>	Recombinant
<b>Purity</b>	Protein G affinity chromatography
<b>Uniprot ID</b>	<b>P10415</b>
<b>Hazard Information</b>	This recombinant Bcl2 antibody is available for research use only.
<b>Dilution Range</b>	Flow cytometry: 1-2ug/million cells, Immunofluorescence: 1-2ug/ml, Western blot: 1-2ug/ml, Immunohistochemistry (FFPE): 1-2ug/ml for 30 min at RT
<b>Expiration Date</b>	12 months from date of receipt.

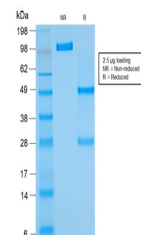
Human Protein Microarray Specificity Validation



Analysis of HuProt (TM) microarray conta...



IHC testing of human follicular lymphoma...



SDS-PAGE analysis of purified, BSA-free ...