
Product Datasheet

Bcl-2 Antibody (orb606372)

Description

This antibody recognizes a protein of 25-26kDa, identified as


Species/Host

Rabbit

Reactivity

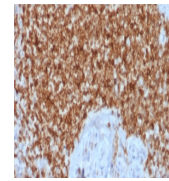
Human

Conjugation

Unconjugated

Tested Applications

IHC-P, WB



IHC testing of
FFPE human
spleen tissue

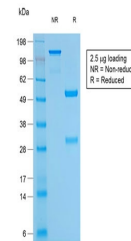
...

Immunogen

Recombinant full length human protein was used as the immunogen for this recombinant Bcl2 antibody.

Preservatives

0.2 mg/ml in 1X PBS with 0.1 mg/ml rAlbumin (US sourced) and 0.05% sodium azide



SDS-PAGE
analysis of
purified, BSA-
free ...

Storage

Store the recombinant Bcl2 antibody at 2-8°C (with azide) or aliquot and store at -20°C or colder (without azide).

Note

For research use only

Application notes

The optimal dilution of the recombinant Bcl2 antibody for each application should be determined by the researcher.1. The prediluted format is supplied in a dropper bottle and is optimized for use in IHC. After epitope retrieval step (if required), drip mAb solution onto the tissue section and incubate at RT for 30 min.



Western blot
testing of
human MCF7
cell ...

Formula

0.2 mg/ml in 1X PBS with 0.1 mg/ml BSA (US sourced) and 0.05% sodium azide

Isotype

Rabbit IgG, kappa

Clonality

Recombinant

Purity

Protein A affinity chromatography

Uniprot ID

P10415

Hazard Information

This recombinant Bcl2 antibody is available for research use only.

Dilution Range

Western blot: 1-2ug/ml, Immunohistochemistry (FFPE): 1-2ug/ml for 30 min at RT

Expiration Date

12 months from date of receipt.