
Product Datasheet

CEA Antibody / Carcinoembryonic Antigen (orb606358)

Description

This antibody recognizes proteins of 80-200kDa,


Species/Host

Mouse

Reactivity

Human

Conjugation

Unconjugated

Tested Applications

ELISA, IHC-P

IHC staining of FFPE human colon with CEA...

Immunogen

Purified full length human protein was used as the immunogen for the CEA antibody.

Preservatives

0.2 mg/ml in 1X PBS with 0.1 mg/ml rAlbumin (US sourced) and 0.05% sodium azide

Storage

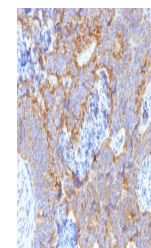
Store the CEA antibody at 2-8°C (with azide) or aliquot and store at -20°C or colder (without azide).

Note

For research use only

Application notes

Optimal dilution of the CEA antibody to be determined by the researcher.



IHC staining of FFPE human colon with CEA...

Formula

0.2 mg/ml in 1X PBS with 0.1 mg/ml BSA (US sourced) and 0.05% sodium azide

Isotype

Mouse IgG1

Clonality

Monoclonal

Purity

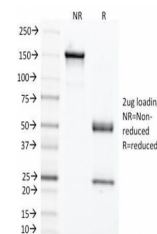
Protein G affinity chromatography

Uniprot ID

P06731

Hazard Information

This CEA antibody is available for research use only.



SDS-PAGE analysis of purified, BSA-free ...

Dilution Range

ELISA (order BSA/sodium azide-free format for coating), Immunohistochemistry (FFPE): 1-2ug/ml for 30 min at RT (1) (2)

Expiration Date

12 months from date of receipt.