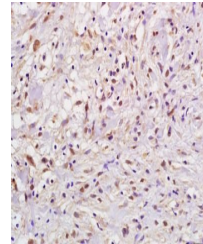


Product Datasheet

FANCD2 (phospho-Ser222) antibody (orb6036)

Description	FANCD2 (phospho-Ser222) antibody
Species/Host	Rabbit
Reactivity	Human
Conjugation	Unconjugated
Tested Applications	ELISA, IF, IHC-Fr, IHC-P, WB
Immunogen	KLH conjugated Synthesised phosphopeptide derived from human FANCD2 around the phosphorylation site of Ser222 (GD(p-S)QH)
Target	phospho-FANCD2 (Ser222)
Preservatives	0.01M TBS(pH7.4) with 1% rAlbumin, 0.03% Proclin300 and 50% Glycerol.
Form/Appearance	Liquid
Concentration	1mg/ml
Storage	Shipped at 4°C. Store at -20 °C for one year. Avoid repeated freeze/thaw cycles.
Note	For research use only
Isotype	IgG
Clonality	Polyclonal
MW	162 kDa
Uniprot ID	Q9BXW9
Expiration Date	12 months from date of receipt.



Immunohistochemical analysis of formalin...