
Product Datasheet

Estrogen Receptor alpha (phospho-Ser104/106) antibody (orb6022)

Description

Estrogen Receptor alpha (phospho-


Species/Host

Rabbit

Reactivity

Human, Rat

Conjugation

Unconjugated

Tested Applications

FC, ICC

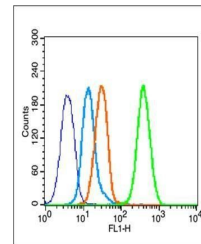
Immunohistochemical staining of Rat uter...

Immunogen

KLH conjugated Synthesised phosphopeptide derived from human ER alpha around the phosphorylation site of Ser104/106 (SV(p-S)P(p-S)PL)

Target

Phospho-Estrogen Receptor alpha (Ser104 + Ser106)


 Flow cytometric analysis of MCF7 cell
US...

Preservatives

0.01M TBS(pH7.4) with 1% rAlbumin, 0.03% Proclin300 and 50% Glycerol.

Form/Appearance

Liquid

Concentration

1mg/ml

Storage

Shipped at 4°C. Store at -20 °C for one year. Avoid repeated freeze/thaw cycles.

Note

For research use only

Isotype

IgG

Clonality

Polyclonal

MW

66 kDa

Uniprot ID
P03372
Dilution Range

ICC=1:100, Flow-Cyt=1µg /Test, WB=1:500-2000, IHC-P=1:100-500, IHC-F=1:100-500, IF=1:100-500, ELISA=1:5000-10000

Expiration Date

12 months from date of receipt.