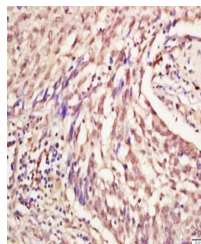


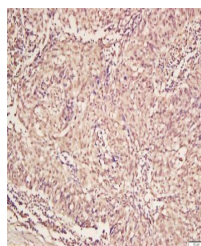
Product Datasheet

REV-ERB alpha (phospho-Ser55/59) antibody (orb6020)

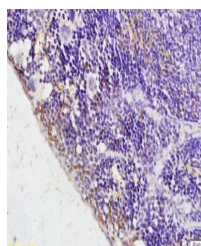
Description	REV-ERB alpha (phospho-Ser55/59) antibody
Species/Host	Rabbit
Reactivity	Human
Conjugation	Unconjugated
Tested Applications	FC, IHC-P
Immunogen	KLH conjugated Synthesised phosphopeptide derived from human REV-ERB alpha around the phosphorylation site of Ser55/59 (PP(p-S)PTG(p-S)LT)
Target	Phospho-NR1D1 (Ser55 + Ser59)
Preservatives	0.01M TBS(pH7.4) with 1% rAlbumin, 0.03% Proclin300 and 50% Glycerol.
Form/Appearance	Liquid
Concentration	1mg/ml
Storage	Shipped at 4°C. Store at -20 °C for one year. Avoid repeated freeze/thaw cycles.
Note	For research use only
Isotype	IgG
Clonality	Polyclonal
MW	67 kDa
Uniprot ID	P20393
Dilution Range	IHC-P=1:100-500, WB=1:500-2000, IHC-F=1:100-500, IF=1:100-500, ELISA=1:5000-10000
Expiration Date	12 months from date of receipt.



Immunohistochemical staining of human la...



Immunohistochemical staining of human la...



Immunohistochemical staining of rat sple...