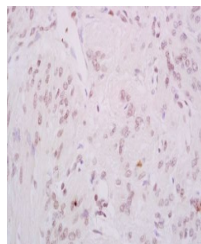


Product Datasheet

DNA PKCs (phospho-Ser2056) antibody (orb5978)

Description	DNA PKCs (phospho-Ser2056) antibody
Species/Host	Rabbit
Reactivity	Human
Conjugation	Unconjugated
Tested Applications	IHC-P
Immunogen	KLH conjugated synthesised phosphopeptide derived from human DNA PKCs around the phosphorylation site of Ser2056 (YS(p-S)QD)
Target	phospho-DNA PKCs (Ser2056)
Preservatives	0.01M TBS(pH7.4) with 1% rAlbumin, 0.03% Proclin300 and 50% Glycerol.
Form/Appearance	Liquid
Concentration	1mg/ml
Storage	Shipped at 4°C. Store at -20 °C for one year. Avoid repeated freeze/thaw cycles.
Note	For research use only
Isotype	IgG
Clonality	Polyclonal
MW	454 kDa
Uniprot ID	P78527
Dilution Range	IHC-P=1:100-500
Expiration Date	12 months from date of receipt.



Immunohistochemical analysis of formalin...