

---

## Product Datasheet

### DDX4 antibody (orb5967)

**Description**

DDX4 antibody

**Species/Host**

Rabbit

**Reactivity**

Bovine, Canine, Gallus, Human, Mouse, Porcine, Rat

**Conjugation**

Unconjugated

**Tested Applications**

ELISA, IHC-P, WB

**Immunogen**

KLH conjugated synthetic peptide derived from human DDX4. Please contact us for the exact immunogen sequence. The peptide is available as orb374780.

**Target**

DDX4

**Form/Appearance**

10 mM PBS, 0.02% sodium azide

**Concentration**

- 100 µg (in 200 µl): 0.5 mg/ml- 200 µg (in 400 µl): 0.5 mg/ml

**Storage**

Store at 4°C for up to two weeks. For long term storage, aliquot and store at -20°C, avoid freeze/thaw cycles.

**Note**

For research use only

**Isotype**

IgG

**Clonality**

Polyclonal

**Purity**

Polyclonal antibodies are purified by peptide affinity chromatography

**MW**

80 kDa

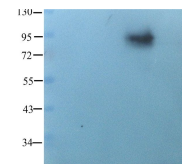
**Uniprot ID**
[Q9NQI0](#), [Q61496](#), [Q64060](#)
**NCBI**
[024415](#), [21](#), [077726](#), [11](#)
**Entrez**
[54514](#)
**Dilution Range**

IHC-P: 1:100-800, WB: 1:100-800

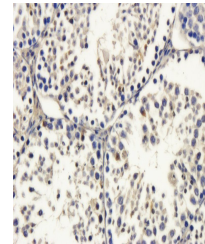
**Expiration Date**

12 months from date of receipt.

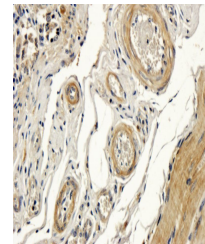
M 1 2 3 4



Western blot analysis of rat brain (lane...



Immunohistochemical staining of paraffin...



IHC-P staining of pig small intestines t...