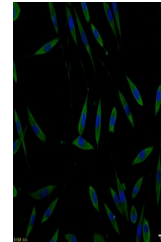


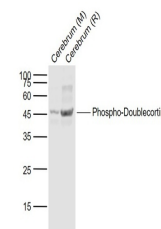
Product Datasheet

Doublecortin (phospho-Ser297) antibody (orb5964)

Description	Doublecortin (phospho-Ser297) antibody
Species/Host	Rabbit
Reactivity	Human, Mouse, Rat
Conjugation	Unconjugated
Tested Applications	FC, ICC, IHC-P, WB
Immunogen	KLH conjugated Synthesised phosphopeptide derived from human Doublecortin around the phosphorylation site of Ser47 (AL(p-S)NE)
Target	Phospho-Doublecortin (Ser47)
Preservatives	0.01M TBS(pH7.4) with 1% rAlbumin, 0.03% Proclin300 and 50% Glycerol.
Form/Appearance	Liquid
Concentration	1mg/ml
Storage	Maintain refrigerated at 2-8°C for up to 2 weeks. For long term storage store at -20°C in small aliquots to prevent freeze-thaw cycles.
Note	For research use only
Isotype	IgG
Clonality	Polyclonal
MW	40 kDa
Uniprot ID	O43602
Dilution Range	WB=1:500-2000, IHC-P=1:100-500, ICC=1:100, Flow-Cyt=1µg/Test, IHC-F=1:100-500, IF=1:100-500, ELISA=1:5000-10000
Expiration Date	12 months from date of receipt.



ICC analysis of SHSY5Y cell using Phospho-Doublecortin antibody



Western blot: Lane 1: Cerebrum (Mouse); Lane 2: Cerebrum (Rat)