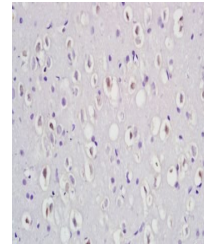


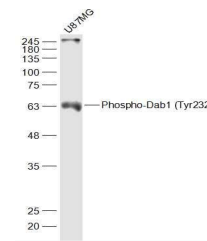
Product Datasheet

Dab1 (phospho-Tyr232) antibody (orb5955)

Description	Dab1 (phospho-Tyr232) antibody
Species/Host	Rabbit
Reactivity	Human
Conjugation	Unconjugated
Tested Applications	WB
Immunogen	KLH conjugated Synthesised phosphopeptide derived from human Dab1 around the phosphorylation site of Tyr232 (GV(p-Y)DV)
Target	Phospho-Dab1 (Tyr232)
Preservatives	0.01M TBS(pH7.4) with 1% rAlbumin, 0.03% Proclin300 and 50% Glycerol.
Form/Appearance	Liquid
Concentration	1mg/ml
Storage	Shipped at 4°C. Store at -20 °C for one year. Avoid repeated freeze/thaw cycles.
Note	For research use only
Isotype	IgG
Clonality	Polyclonal
MW	65 kDa
Uniprot ID	075553
Dilution Range	WB=1:500-2000
Expiration Date	12 months from date of receipt.



Immunohistochemical analysis of formalin...



Western blot analysis of Human U87MG Cel...