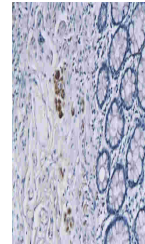


Product Datasheet

Ret (phospho-Tyr1062) antibody (orb5942)

Description	Ret (phospho-Tyr1062) antibody
Species/Host	Rabbit
Conjugation	Unconjugated
Tested Applications	ELISA, IF, IHC-Fr, IHC-P, WB
Immunogen	KLH conjugated Synthesised phosphopeptide derived from human Ret around the phosphorylation site of Tyr1062 (KL(p-Y)GM)
Target	Phospho-Ret (Tyr1062)
Preservatives	0.01M TBS(pH7.4) with 1% rAlbumin, 0.03% Proclin300 and 50% Glycerol.
Form/Appearance	Liquid
Concentration	1mg/ml
Storage	Shipped at 4°C. Store at -20 °C for one year. Avoid repeated freeze/thaw cycles.
Note	For research use only
Isotype	IgG
Clonality	Polyclonal
MW	34/76/122 kDa
Uniprot ID	P07949
Expiration Date	12 months from date of receipt.



IHC-P of human colon cancer using Ret (p...