

---

## Product Datasheet

### CYP11B1 antibody (orb5937)

**Description**

CYP11B1 antibody

**Species/Host**

Rabbit

**Reactivity**

Human, Mouse, Porcine, Rat

**Conjugation**

Unconjugated

**Tested Applications**

ICC, IF, IHC-P, WB

**Immunogen**

KLH conjugated synthetic peptide derived from human CYP11B1. Please contact us for the exact immunogen sequence. The peptide is available as orb12918.

**Target**

CYP11B1

**Form/Appearance**

10 mM PBS, 0.02% sodium azide

**Concentration**

- 100 µg (in 200 µl): 0.5 mg/ml- 200 µg (in 400 µl): 0.5 mg/ml

**Storage**

Store at 4°C for up to two weeks. For long term storage, aliquot and store at -20°C, avoid freeze/thaw cycles.

**Note**

For research use only

**Isotype**

IgG

**Clonality**

Polyclonal

**Purity**

Polyclonal antibodies are purified by peptide affinity chromatography

**MW**

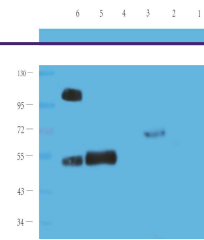
58 kDa

**Uniprot ID**
[P15538](https://www.uniprot.org/uniprot/P15538)
**NCBI**
[11, 005250807](https://www.ncbi.nlm.nih.gov/nuccore/11005250807), [005250864](https://www.ncbi.nlm.nih.gov/nuccore/11005250864)
**Entrez**
[1584](https://www.ncbi.nlm.nih.gov/nuccore/1584)
**Dilution Range**

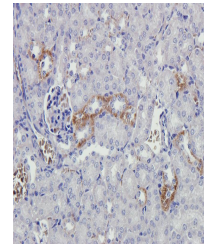
IF/ICC: 1:50-500, IHC-P: 1:50-300, WB: 1:200-2000

**Expiration Date**

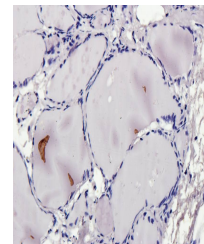
12 months from date of receipt.



WB analysis of mouse brain (lane 1), rat...



Immunohistochemical staining of mouse ki...



Immunohistochemical staining of paraffin...