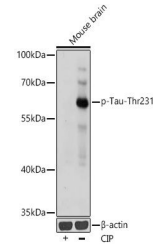


## Product Datasheet

### Tau (Phospho-Thr231) antibody (orb593322)

<b>Description</b>	Rabbit polyclonal antibody to Tau (Phospho-Thr231)
<b>Reactivity</b>	Mouse
<b>Conjugation</b>	Unconjugated
<b>Tested Applications</b>	WB
<b>Immunogen</b>	A synthetic phosphorylated peptide around T548 of human Tau(NP_058519.3?).
<b>Preservatives</b>	PBS with 0.01% thiomersal,50% glycerol,pH7.3.
<b>Storage</b>	Maintain refrigerated at 2-8°C for up to 2 weeks. For long term storage store at -20°C in small aliquots to prevent freeze-thaw cycles.
<b>Note</b>	For research use only
<b>Isotype</b>	IgG
<b>Clonality</b>	Polyclonal
<b>MW</b>	60kDa
<b>Uniprot ID</b>	<b>P10636</b>
<b>Dilution Range</b>	WB: 1:500-2000
<b>Expiration Date</b>	12 months from date of receipt.



Western blot analysis of extracts of Mou...