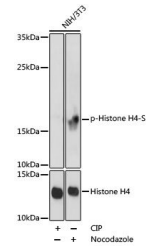


## Product Datasheet

### Histone H4 (Phospho-S1) antibody (orb593305)

<b>Description</b>	Rabbit polyclonal antibody to Histone H4 (Phospho-S1)
<b>Species/Host</b>	Rabbit
<b>Reactivity</b>	Human
<b>Conjugation</b>	Unconjugated
<b>Tested Applications</b>	IHC, WB
<b>Immunogen</b>	A phospho specific peptide corresponding to residues surrounding S1 of human Histone H4.
<b>Preservatives</b>	Buffer: PBS with 0.02% sodium azide, 50% glycerol, pH 7.3.
<b>Storage</b>	Maintain refrigerated at 2-8°C for up to 2 weeks. For long term storage store at -20°C in small aliquots to prevent freeze-thaw cycles.
<b>Note</b>	For research use only
<b>Isotype</b>	IgG
<b>Clonality</b>	Polyclonal
<b>Purity</b>	Affinity purification
<b>MW</b>	17kDa
<b>Uniprot ID</b>	<b>P62805</b>
<b>Entrez</b>	<b>8359</b>
<b>Dilution Range</b>	WB: 1:500-2000, IHC-P: 1:100-200
<b>Expiration Date</b>	12 months from date of receipt.



Western blot analysis of extracts of NIH...