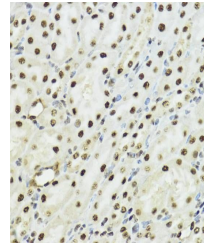


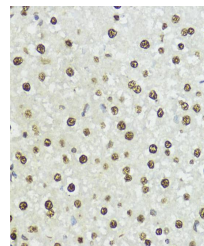
Product Datasheet

Histone H3 (Phospho-S10/T11) antibody (orb593304)

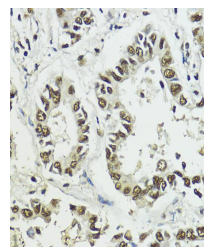
Description	Rabbit polyclonal antibody to Histone H3 (Phospho-S10/T11)
Species/Host	Rabbit
Reactivity	Human, Mouse, Rat
Conjugation	Unconjugated
Tested Applications	IF, IHC, WB
Immunogen	A phospho specific peptide corresponding to residues surrounding S10/T11 of human Histone H3.
Preservatives	Buffer: PBS with 0.02% sodium azide,50% glycerol,pH7.3.
Storage	Maintain refrigerated at 2-8°C for up to 2 weeks. For long term storage store at -20°C in small aliquots to prevent freeze-thaw cycles.
Note	For research use only
Isotype	IgG
Clonality	Polyclonal
Purity	Affinity purification
MW	17kDa
Uniprot ID	P68431
Entrez	8350
Dilution Range	WB: 1:500-2000, IHC-P: 1:50-200, IF: 1:50-200
Expiration Date	12 months from date of receipt.



Immunohistochemical staining of mouse kidney tissue.



Immunohistochemical staining of rat liver tissue.



Immunohistochemical staining of human lung tissue.