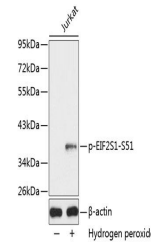


Product Datasheet

eIF2 (Phospho-S51) antibody (orb593298)

Description	Rabbit polyclonal antibody to eIF2 α (Phospho-S51)
Species/Host	Rabbit
Reactivity	Human
Conjugation	Unconjugated
Tested Applications	WB
Immunogen	A phospho specific peptide corresponding to residues surrounding S51 of human EIF2S1
Preservatives	Buffer: PBS with 0.02% sodium azide,50% glycerol,pH7.3.
Storage	Maintain refrigerated at 2-8°C for up to 2 weeks. For long term storage store at -20°C in small aliquots to prevent freeze-thaw cycles.
Note	For research use only
Isotype	IgG
Clonality	Polyclonal
Purity	Affinity purification
MW	38KDa
Uniprot ID	P05198
Entrez	1965
Dilution Range	WB: 1:500-2000
Expiration Date	12 months from date of receipt.



Western blot analysis of extracts from J...