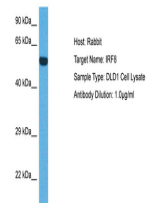


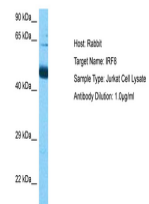
Product Datasheet

IRF8 antibody (orb592901)

Description	Rabbit polyclonal antibody to IRF8
Species/Host	Rabbit
Reactivity	Human
Conjugation	Unconjugated
Tested Applications	IHC, WB
Immunogen	The immunogen is a synthetic peptide directed towards the N terminal region of human IRF8
Target	IRF8
Preservatives	Liquid. Purified antibody supplied in 1x PBS buffer with 0.09% (w/v) sodium azide and 2% sucrose.
Form/Appearance	Liquid. Purified antibody supplied in 1x PBS buffer with 0.09% (w/v) sodium azide and 2% sucrose.
Concentration	1.0 mg/ml
Storage	Maintain refrigerated at 2-8°C for up to 2 weeks. For long term storage store at -20°C in small aliquots to prevent freeze-thaw cycles.
Note	For research use only
Protein Sequence	Synthetic peptide located within the following region: MFRIPWKHAGKQDYNQEVDASIFKAWAVFKGKFKEGDKAEPATWKTRLRC
Clonality	Polyclonal
MW	48kDa
Uniprot ID	Q02556
NCBI	NP_002154
Expiration Date	12 months from date of receipt.

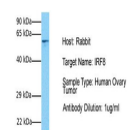


Host: Rabbit,
Target Name:
IRF8, Sample ...



Host: Rabbit,
Target Name:
IRF8, Sample ...

IRF8



Host: Rabbit,
Target Name:
IRF8, Sample ...