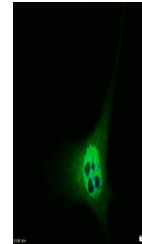


Product Datasheet

Cyclin D1 (phospho-Thr286) antibody (orb5929)

Description	Cyclin D1 (phospho-Thr286) antibody
Species/Host	Rabbit
Reactivity	Human
Conjugation	Unconjugated
Tested Applications	ICC
Immunogen	KLH conjugated Synthesised phosphopeptide derived from human Cyclin D1 around the phosphorylation site of Thr286 (AC(p-T)PT)
Target	Phospho-Cyclin D1 (Thr286)
Preservatives	0.01M TBS(pH7.4) with 1% rAlbumin, 0.03% Proclin300 and 50% Glycerol.
Form/Appearance	Liquid
Concentration	1mg/ml
Storage	Maintain refrigerated at 2-8°C for up to 2 weeks. For long term storage store at -20°C in small aliquots to prevent freeze-thaw cycles.
Note	For research use only
Isotype	IgG
Clonality	Polyclonal
MW	34 kDa
Uniprot ID	P25322
Dilution Range	ICC=1:100, IHC-P=1:100-500, IHC-F=1:100-500, IF=1:100-500, ELISA=1:5000-10000
Expiration Date	12 months from date of receipt.



ICC analysis of A431 cell using Phospho-...