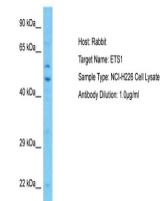


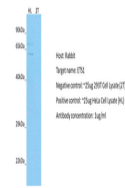
Product Datasheet

ETS1 antibody (orb592832)

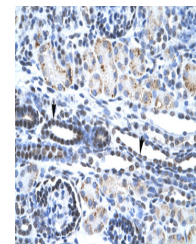
Description	Rabbit polyclonal antibody to ETS1
Species/Host	Rabbit
Reactivity	Human
Conjugation	Unconjugated
Tested Applications	IHC, WB
Immunogen	The immunogen is a synthetic peptide directed towards the N terminal region of human ETS1
Target	ETS1
Preservatives	Liquid. Purified antibody supplied in 1x PBS buffer with 0.09% (w/v) sodium azide and 2% sucrose.
Form/Appearance	Liquid. Purified antibody supplied in 1x PBS buffer with 0.09% (w/v) sodium azide and 2% sucrose.
Concentration	1.0 mg/ml
Storage	Maintain refrigerated at 2-8°C for up to 2 weeks. For long term storage store at -20°C in small aliquots to prevent freeze-thaw cycles.
Note	For research use only
Protein Sequence	Synthetic peptide located within the following region: TFSGFTKEQQLGIPKDPRQWTETHVRDWMWAVNEFSLKGVDFQKFCMN
Clonality	Polyclonal
MW	50kDa
Uniprot ID	P14921
NCBI	NP_005229
Expiration Date	12 months from date of receipt.



Host: Rabbit,
Target Name:
ETS1, Sample ...



Host: Rabbit,
Target: ETS1,
Positive con...



Human kidney