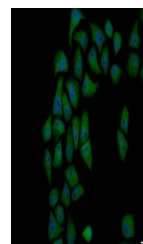


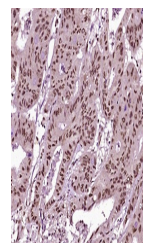
Product Datasheet

Cyclin B1 (phospho-Ser126) antibody (orb5928)

Description	Cyclin B1 (phospho-Ser126) antibody
Species/Host	Rabbit
Reactivity	Human
Conjugation	Unconjugated
Tested Applications	ICC, IHC-P
Immunogen	KLH conjugated synthesised phosphopeptide derived from human Cyclin B1 around the phosphorylation site of Ser126 (TA(p-S)PS)
Target	Phospho-Cyclin B1 (Ser126)
Preservatives	0.01M TBS(pH7.4) with 1% rAlbumin, 0.03% Proclin300 and 50% Glycerol.
Form/Appearance	Liquid
Concentration	1mg/ml
Storage	Maintain refrigerated at 2-8°C for up to 2 weeks. For long term storage store at -20°C in small aliquots to prevent freeze-thaw cycles.
Note	For research use only
Isotype	IgG
Clonality	Polyclonal
MW	48 kDa
Uniprot ID	P14635
Dilution Range	IHC-P=1:100-500, ICC=1:100, IHC-F=1:100-500, IF=1:100-500, ELISA=1:5000-10000
Expiration Date	12 months from date of receipt.



ICC analysis of HeLa cell using Phospho-...



IHC-P analysis of Human colon carcinoma ...