

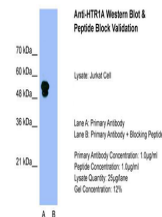
Product Datasheet

HTR1A antibody (orb592791)

Description	Rabbit polyclonal antibody to HTR1A
Species/Host	Rabbit
Reactivity	Human
Conjugation	Unconjugated
Tested Applications	IF, WB
Immunogen	The immunogen is a synthetic peptide directed towards the N terminal region of human HTR1A
Target	HTR1A
Preservatives	Liquid. Purified antibody supplied in 1x PBS buffer with 0.09% (w/v) sodium azide and 2% sucrose.
Form/Appearance	Liquid. Purified antibody supplied in 1x PBS buffer with 0.09% (w/v) sodium azide and 2% sucrose.
Concentration	0.5 mg/ml
Storage	Maintain refrigerated at 2-8°C for up to 2 weeks. For long term storage store at -20°C in small aliquots to prevent freeze-thaw cycles.
Note	For research use only
Protein Sequence	Synthetic peptide located within the following region: GQGNNTTSPAPFETGGNTTGISDVTVSQVITSLLLGLIFCAVLGNAC
Clonality	Polyclonal
MW	46kDa
Uniprot ID	P08908
NCBI	NP_000515
Expiration Date	12 months from date of receipt.



Host: Rabbit,
Target Name:
HTR1A,
Sample...



Host: Rabbit,
Target Name:
HTR1A,
Sample...



HTR1A antibody
- N-terminal
region (orb5...