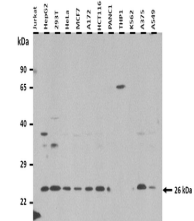


Product Datasheet

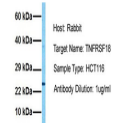
TNFRSF18 antibody (orb592677)

Description	Rabbit polyclonal antibody to TNFRSF18
Species/Host	Rabbit
Reactivity	Human
Conjugation	Unconjugated
Tested Applications	IHC, WB
Immunogen	The immunogen is a synthetic peptide directed towards the C terminal region of human TNFRSF18
Target	TNFRSF18
Preservatives	Liquid. Purified antibody supplied in 1x PBS buffer with 0.09% (w/v) sodium azide and 2% sucrose.
Form/Appearance	Liquid. Purified antibody supplied in 1x PBS buffer with 0.09% (w/v) sodium azide and 2% sucrose.
Concentration	0.5 mg/ml
Storage	Maintain refrigerated at 2-8°C for up to 2 weeks. For long term storage store at -20°C in small aliquots to prevent freeze-thaw cycles.
Note	For research use only
Protein Sequence	Synthetic peptide located within the following region: LRSQCMWPRETQLLLEVPSTEDARSCQFP EEERGSAAEEKGRLGDLWV
Clonality	Polyclonal
MW	26 kDa
Uniprot ID	Q9Y5U5
NCBI	NP_004186
Expiration Date	12 months from date of receipt.

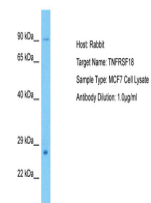


25 ug of the indicated Human whole cell ...

TNFRSF18



Host: Rabbit,
Target Name:
TNFRSF18,
Sam...



Host: Rabbit,
Target Name:
TNFRSF18,
Sam...