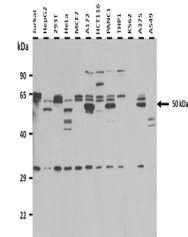


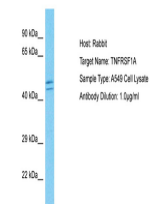
## Product Datasheet

### TNFRSF1A antibody (orb592651)

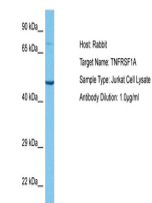
|                            |   |
|----------------------------|---|
| <b>Description</b>         | Rabbit polyclonal antibody to TNFRSF1A  |
| <b>Species/Host</b>        | Rabbit  |
| <b>Reactivity</b>          | Human   |
| <b>Conjugation</b>         | Unconjugated  |
| <b>Tested Applications</b> | IF, WB  |
| <b>Immunogen</b>           | The immunogen is a synthetic peptide directed towards the N terminal region of human TNFRSF1A   |
| <b>Target</b>              | TNFRSF1A  |
| <b>Preservatives</b>       | Liquid. Purified antibody supplied in 1x PBS buffer with 0.09% (w/v) sodium azide and 2% sucrose.                                       |
| <b>Form/Appearance</b>     | Liquid. Purified antibody supplied in 1x PBS buffer with 0.09% (w/v) sodium azide and 2% sucrose.                                       |
| <b>Concentration</b>       | 0.5 mg/ml   |
| <b>Storage</b>             | Maintain refrigerated at 2-8°C for up to 2 weeks. For long term storage store at -20°C in small aliquots to prevent freeze-thaw cycles. |
| <b>Note</b>                | For research use only   |
| <b>Protein Sequence</b>    | Synthetic peptide located within the following region:<br>MGLSTVPDLLLPLVLELLLVGIYPSGVIGLVPHLGDREKRDSVCPQGKYI                            |
| <b>Clonality</b>           | Polyclonal  |
| <b>MW</b>                  | 50 kDa  |
| <b>Uniprot ID</b>          | <a href="#">P19438</a>  |
| <b>NCBI</b>                | <a href="#">NP_001056</a>   |
| <b>Expiration Date</b>     | 12 months from date of receipt.   |



25 ug of the indicated Human whole cell ...



Host: Rabbit, Target Name: TNFRSF1A, Sam...



Host: Rabbit, Target Name: TNFRSF1A, Sam...