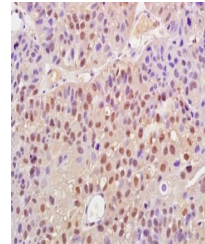


## Product Datasheet

### Cyclin B1(phospho-Ser147) antibody (orb5926)

|                            |  |
|----------------------------|--|
| <b>Description</b>         | Cyclin B1(phospho-Ser147) antibody   |
| <b>Species/Host</b>        | Rabbit   |
| <b>Reactivity</b>          | Human  |
| <b>Conjugation</b>         | Unconjugated   |
| <b>Tested Applications</b> | FC   |
| <b>Immunogen</b>           | KLH conjugated Synthesised phosphopeptide derived from human Cyclin B1 around the phosphorylation site of Ser147 (AF(p-S)DV) |
| <b>Target</b>              | Phospho-Cyclin B1 (Ser147)   |
| <b>Preservatives</b>       | 0.01M TBS(pH7.4) with 1% rAlbumin, 0.03% Proclin300 and 50% Glycerol.  |
| <b>Form/Appearance</b>     | Liquid   |
| <b>Concentration</b>       | 1mg/ml   |
| <b>Storage</b>             | Shipped at 4°C. Store at -20 °C for one year. Avoid repeated freeze/thaw cycles.   |
| <b>Note</b>                | For research use only  |
| <b>Isotype</b>             | IgG  |
| <b>Clonality</b>           | Polyclonal   |
| <b>MW</b>                  | 48 kDa   |
| <b>Uniprot ID</b>          | <b>P14635</b>  |
| <b>Dilution Range</b>      | Flow-Cyt=1µg /Test, WB=1:500-2000, IHC-P=1:100-500, IHC-F=1:100-500, IF=1:100-500, ELISA=1:5000-10000                        |
| <b>Expiration Date</b>     | 12 months from date of receipt.  |



Immunohistochemical analysis of formalin...