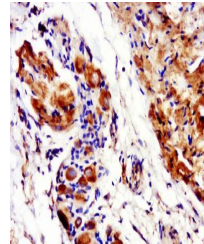


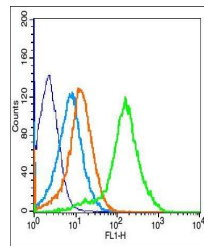
Product Datasheet

Connexin 43(phospho-Ser368) antibody (orb5923)

Description	Connexin 43(phospho-Ser368) antibody
Species/Host	Rabbit
Reactivity	Human, Mouse
Conjugation	Unconjugated
Tested Applications	FC
Immunogen	KLH conjugated Synthesised phosphopeptide derived from human Connexin 43 around the phosphorylation site of Ser368 (RA(p-S)SR)
Target	Phospho-Connexin 43 (Ser368)
Preservatives	0.01M TBS(pH7.4) with 1% rAlbumin, 0.03% Proclin300 and 50% Glycerol.
Form/Appearance	Liquid
Concentration	1mg/ml
Storage	Shipped at 4°C. Store at -20 °C for one year. Avoid repeated freeze/thaw cycles.
Note	For research use only
Isotype	IgG
Clonality	Polyclonal
MW	43 kDa
Uniprot ID	P17302
Dilution Range	Flow-Cyt=1µg /test, IHC-P=1:100-500, IHC-F=1:100-500, ICC=1:100, IF=1:100-500, ELISA=1:5000-10000
Expiration Date	12 months from date of receipt.



Immunohistochemical staining of mouse placenta.



Flow cytometric analysis of Mouse Kidney...