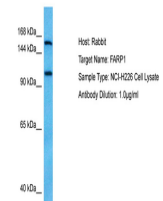


Product Datasheet

FARP1 antibody (orb589116)

Description	Rabbit polyclonal antibody to FARP1
Species/Host	Rabbit
Reactivity	Human
Conjugation	Unconjugated
Tested Applications	WB
Immunogen	The immunogen is a synthetic peptide directed towards the middle region of human FARP1
Target	FARP1
Preservatives	Liquid. Purified antibody supplied in 1x PBS buffer with 0.09% (w/v) sodium azide and 2% sucrose.
Form/Appearance	Liquid. Purified antibody supplied in 1x PBS buffer with 0.09% (w/v) sodium azide and 2% sucrose.
Concentration	0.5 mg/ml
Storage	Maintain refrigerated at 2-8°C for up to 2 weeks. For long term storage store at -20°C in small aliquots to prevent freeze-thaw cycles.
Note	For research use only
Protein Sequence	Synthetic peptide located within the following region: CPRTDDEDEGRRKRFPPTDKAYFIAKEVSTTERTYTKDLEVITSWFQSTVS
Clonality	Polyclonal
MW	119 kDa
Uniprot ID	Q9Y4F1
NCBI	NP_001001715.2
Expiration Date	12 months from date of receipt.



Host: Rabbit,
Target Name:
FARP1,
Sample...