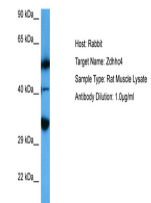


Product Datasheet

ZDHHC4 antibody (orb589045)

Description	Rabbit polyclonal antibody to ZDHHC4
Species/Host	Rabbit
Reactivity	Rat
Conjugation	Unconjugated
Tested Applications	WB
Immunogen	The immunogen is a synthetic peptide directed towards the C terminal region of rat ZDHHC4
Target	ZDHHC4
Preservatives	Liquid. Purified antibody supplied in 1x PBS buffer with 0.09% (w/v) sodium azide and 2% sucrose.
Form/Appearance	Liquid. Purified antibody supplied in 1x PBS buffer with 0.09% (w/v) sodium azide and 2% sucrose.
Concentration	0.5 mg/ml
Storage	Maintain refrigerated at 2-8°C for up to 2 weeks. For long term storage store at -20°C in small aliquots to prevent freeze-thaw cycles.
Note	For research use only
Protein Sequence	Synthetic peptide located within the following region: LAFPRIIFLLGFVIVLSLLLAGYLCFALYLAATNQTTNEWYRGDWAWCQH
Clonality	Polyclonal
MW	39 kDa
Uniprot ID	F1LQN6
NCBI	NP_001013141.1
Expiration Date	12 months from date of receipt.



Sample Tissue:
Rat Muscle
lysates, Antib...