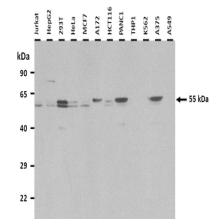


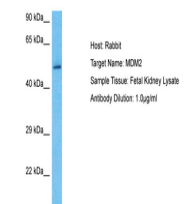
Product Datasheet

MDM2 antibody (orb588417)

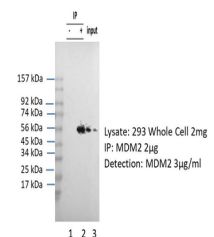
Description	Rabbit polyclonal antibody to MDM2
Species/Host	Rabbit
Reactivity	Human
Conjugation	Unconjugated
Tested Applications	WB
Immunogen	The immunogen is a synthetic peptide directed towards the middle region of Human MDM2
Target	MDM2
Preservatives	Liquid. Purified antibody supplied in 1x PBS buffer with 0.09% (w/v) sodium azide and 2% sucrose.
Form/Appearance	Liquid. Purified antibody supplied in 1x PBS buffer with 0.09% (w/v) sodium azide and 2% sucrose.
Concentration	0.5 mg/ml
Storage	Maintain refrigerated at 2-8°C for up to 2 weeks. For long term storage store at -20°C in small aliquots to prevent freeze-thaw cycles.
Note	For research use only
Protein Sequence	Synthetic peptide located within the following region: EISLADYWKCTSCNEMNPPLPSHCNRCWALRENWLPEDKGGKDKGEISEKA
Clonality	Polyclonal
MW	55 kDa
Uniprot ID	Q00987
Expiration Date	12 months from date of receipt.



25 ug of the indicated Human whole cell ...



Sample Type: Fetal Kidney lysates, Antib...



MDM2 was immunoprecipitated from 1 mg HE...