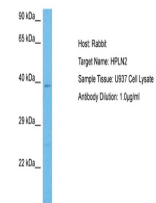


Product Datasheet

HAPLN2 antibody (orb588270)

Description	Rabbit polyclonal antibody to HAPLN2
Species/Host	Rabbit
Reactivity	Human
Conjugation	Unconjugated
Tested Applications	WB
Immunogen	The immunogen for Anti-HAPLN2 antibody is: synthetic peptide directed towards the C-terminal region of Human HPLN2
Target	HAPLN2
Preservatives	Liquid. Purified antibody supplied in 1x PBS buffer with 0.09% (w/v) sodium azide and 2% sucrose.
Form/Appearance	Liquid. Purified antibody supplied in 1x PBS buffer with 0.09% (w/v) sodium azide and 2% sucrose.
Concentration	0.5 mg/ml
Storage	Maintain refrigerated at 2-8°C for up to 2 weeks. For long term storage store at -20°C in small aliquots to prevent freeze-thaw cycles.
Note	For research use only
Protein Sequence	Synthetic peptide located within the following region: YQAWTEGLDWCNAGWLLLEGSVRYPLVTARAPCGGRGPRGIRSYGPRDRMR
Clonality	Polyclonal
MW	37 kDa
Uniprot ID	Q9GZV7
NCBI	XP_005245472.1
Expiration Date	12 months from date of receipt.



WB Suggested
Anti-HPLN2
antibody
Titrati...