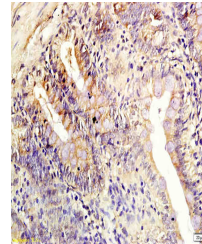


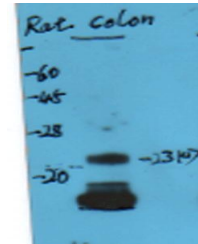
Product Datasheet

CLDN3 antibody (orb5878)

Description	CLDN3 antibody
Species/Host	Rabbit
Conjugation	Unconjugated
Tested Applications	IF, IHC-Fr, IHC-P
Immunogen	KLH conjugated synthetic peptide derived from human CLDN3 (51-150/220 aa)
Target	Claudin 3
Preservatives	0.01M TBS(pH7.4) with 1% rAlbumin, 0.03% Proclin300 and 50% Glycerol.
Form/Appearance	Liquid
Concentration	1mg/ml
Storage	Shipped at 4°C. Store at -20 °C for one year. Avoid repeated freeze/thaw cycles.
Note	For research use only
Isotype	IgG
Clonality	Polyclonal
MW	23 kDa
Uniprot ID	O15551
Expiration Date	12 months from date of receipt.



Immunohistochemical analysis of paraffin...



Western Blot analysis of rat colon cell ...