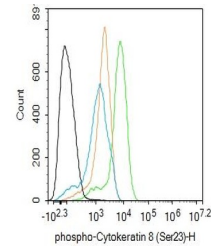


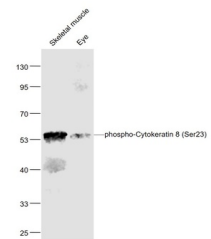
## Product Datasheet

### CK8 (phospho-Ser23) antibody (orb5868)

<b>Description</b>	CK8 (phospho-Ser23) antibody
<b>Species/Host</b>	Rabbit
<b>Reactivity</b>	Human, Mouse
<b>Conjugation</b>	Unconjugated
<b>Tested Applications</b>	FC, WB
<b>Immunogen</b>	KLH conjugated synthesised phosphopeptide derived from human CK8 around the phosphorylation site of Ser23 (SR(p-S)YT)
<b>Target</b>	phospho-Cytokeratin 8 (Ser23)
<b>Preservatives</b>	0.01M TBS(pH7.4) with 1% rAlbumin, 0.03% Proclin300 and 50% Glycerol.
<b>Form/Appearance</b>	Liquid
<b>Concentration</b>	1mg/ml
<b>Storage</b>	Maintain refrigerated at 2-8°C for up to 2 weeks. For long term storage store at -20°C in small aliquots to prevent freeze-thaw cycles.
<b>Note</b>	For research use only
<b>Isotype</b>	IgG
<b>Clonality</b>	Polyclonal
<b>MW</b>	53 kDa
<b>Uniprot ID</b>	<b>P05787</b>
<b>Dilution Range</b>	WB=1:500-2000, Flow-Cyt=1ug/Test
<b>Expiration Date</b>	12 months from date of receipt.



Flow cytometry of MCF-7.Primary Antibody...



Western blot:Skeletal muscle(Mouse);Eye(...)