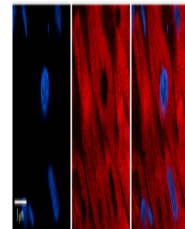


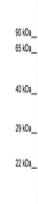
Product Datasheet

EIF2B2 antibody (orb586312)

Description	Rabbit polyclonal antibody to EIF2B2
Species/Host	Rabbit
Reactivity	Human
Conjugation	Unconjugated
Tested Applications	IHC, WB
Immunogen	The immunogen is a synthetic peptide directed towards the middle region of Human EIF2B2
Target	EIF2B2
Preservatives	Liquid. Purified antibody supplied in 1x PBS buffer with 0.09% (w/v) sodium azide and 2% sucrose.
Form/Appearance	Liquid. Purified antibody supplied in 1x PBS buffer with 0.09% (w/v) sodium azide and 2% sucrose.
Concentration	0.5 mg/ml
Storage	Maintain refrigerated at 2-8°C for up to 2 weeks. For long term storage store at -20°C in small aliquots to prevent freeze-thaw cycles.
Note	For research use only
Protein Sequence	Synthetic peptide located within the following region: EGTMENIAAQALEHIHSNEVIMTIGFSRTVEAFLKEAARKRKFHVIVAEC
Clonality	Polyclonal
MW	39kDa
Uniprot ID	P49770
NCBI	NP_055054
Expiration Date	12 months from date of receipt.



Rabbit Anti-EIF2B2 Antibody, Catalog Num...



WB Suggested Anti-EIF2B2 Antibody, Titra...