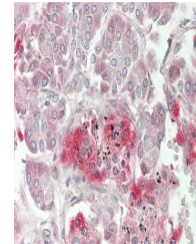


Product Datasheet

ADM2 antibody (orb586050)

Description	Rabbit polyclonal antibody to ADM2
Species/Host	Rabbit
Conjugation	Unconjugated
Tested Applications	IHC
Immunogen	The immunogen is a synthetic peptide directed towards the following sequence GPRRTQAQLLRVGCVLGTCQVQNLSHRLWQLMGPAQRQDSAPVDPSSPHS
Target	ADM2
Preservatives	Liquid. Purified antibody supplied in 1x PBS buffer with 0.09% (w/v) sodium azide and 2% sucrose.
Form/Appearance	Liquid. Purified antibody supplied in 1x PBS buffer with 0.09% (w/v) sodium azide and 2% sucrose.
Concentration	0.5 mg/ml
Storage	Maintain refrigerated at 2-8°C for up to 2 weeks. For long term storage store at -20°C in small aliquots to prevent freeze-thaw cycles.
Note	For research use only
Protein Sequence	Synthetic peptide located within the following region: GPRRTQAQLLRVGCVLGTCQVQNLSHRLWQLMGPAQRQDSAPVDPSSPHS
Clonality	Polyclonal
MW	16 kDa
Uniprot ID	Q7Z4H4
NCBI	NP_079142
Expiration Date	12 months from date of receipt.



Rabbit Anti-ADM2 antibody, Formalin Fixe...