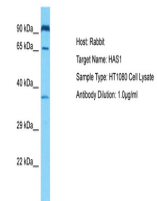


Product Datasheet

HAS1 antibody (orb585623)

Description	Rabbit polyclonal antibody to HAS1
Species/Host	Rabbit
Reactivity	Human
Conjugation	Unconjugated
Tested Applications	WB
Target	HAS1
Preservatives	Liquid. Purified antibody supplied in 1x PBS buffer with 0.09% (w/v) sodium azide and 2% sucrose.
Form/Appearance	Liquid. Purified antibody supplied in 1x PBS buffer with 0.09% (w/v) sodium azide and 2% sucrose.
Concentration	0.5 mg/ml
Storage	Maintain refrigerated at 2-8°C for up to 2 weeks. For long term storage store at -20°C in small aliquots to prevent freeze-thaw cycles.
Note	For research use only
Protein Sequence	Synthetic peptide located within the following region: EPAAAGAVGAGAYREVEAEDPGRLAVEALVRTRRCVCVAQRWGGKREVMY
Clonality	Polyclonal
MW	64kDa
Uniprot ID	Q92839
NCBI	NP_001514
Expiration Date	12 months from date of receipt.



Host: Rabbit,
Target Name:
HAS1, Sample ...



WB Suggested
Anti-HAS1
Antibody,
Titrati...