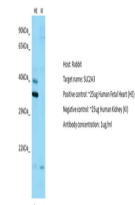


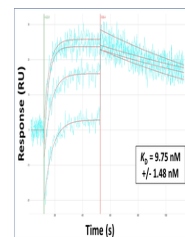
Product Datasheet

SLC2A3 antibody (orb585610)

Description	Rabbit polyclonal antibody to SLC2A3
Species/Host	Rabbit
Reactivity	Human
Conjugation	Unconjugated
Tested Applications	WB
Target	SLC2A3
Preservatives	Liquid. Purified antibody supplied in 1x PBS buffer with 0.09% (w/v) sodium azide and 2% sucrose.
Form/Appearance	Liquid. Purified antibody supplied in 1x PBS buffer with 0.09% (w/v) sodium azide and 2% sucrose.
Concentration	0.5 mg/ml
Storage	Maintain refrigerated at 2-8°C for up to 2 weeks. For long term storage store at -20°C in small aliquots to prevent freeze-thaw cycles.
Note	For research use only
Protein Sequence	Synthetic peptide located within the following region: EELWPLLLGFTILPAILQSAALPFCPEsprFLINRKEEENAKQILQRLW
Clonality	Polyclonal
MW	55kDa
Uniprot ID	P11169
NCBI	NP_008862
Expiration Date	12 months from date of receipt.



Host: Rabbit,
Target: SLC2A3,
Positive c...



Surface
Plasmon
Resonance
Kinetic
Charac...



WB Suggested
Anti-SLC2A3
Antibody
Titrat...