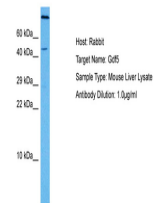


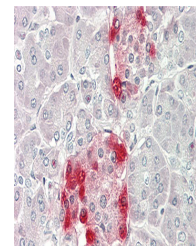
Product Datasheet

GDF5 antibody (orb585603)

Description	Rabbit polyclonal antibody to GDF5
Species/Host	Rabbit
Reactivity	Human, Mouse
Conjugation	Unconjugated
Tested Applications	IHC, WB
Immunogen	The immunogen is a synthetic peptide directed towards the C-terminal region of GDF5
Target	GDF5
Preservatives	Liquid. Purified antibody supplied in 1x PBS buffer with 0.09% (w/v) sodium azide and 2% sucrose.
Form/Appearance	Liquid. Purified antibody supplied in 1x PBS buffer with 0.09% (w/v) sodium azide and 2% sucrose.
Concentration	0.5 mg/ml
Storage	Maintain refrigerated at 2-8°C for up to 2 weeks. For long term storage store at -20°C in small aliquots to prevent freeze-thaw cycles.
Note	For research use only
Protein Sequence	Synthetic peptide located within the following region: YLFSQRRRRAPLATRQGRPSKNLKARCSRKALHVNFKDMGWDDWIIAP
Clonality	Polyclonal
MW	55kDa
Uniprot ID	P43026
NCBI	NP_000548
Expiration Date	12 months from date of receipt.



Host: Mouse,
Target Name:
GDF5, Sample
T...



Rabbit Anti-
GDF5 antibody,
Formalin Fixe...



WB Suggested
Anti-GDF5
Antibody,
Titration...