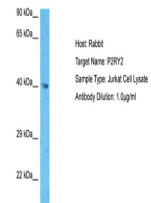


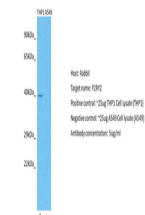
Product Datasheet

P2RY2 antibody (orb585578)

Description	Rabbit polyclonal antibody to P2RY2
Species/Host	Rabbit
Reactivity	Human
Conjugation	Unconjugated
Tested Applications	WB
Target	P2RY2
Preservatives	Liquid. Purified antibody supplied in 1x PBS buffer with 0.09% (w/v) sodium azide and 2% sucrose.
Form/Appearance	Liquid. Purified antibody supplied in 1x PBS buffer with 0.09% (w/v) sodium azide and 2% sucrose.
Concentration	0.5 mg/ml
Storage	Maintain refrigerated at 2-8°C for up to 2 weeks. For long term storage store at -20°C in small aliquots to prevent freeze-thaw cycles.
Note	For research use only
Protein Sequence	Synthetic peptide located within the following region: KPPTGSPATPARRRLGLRRSDRTDMQRIEDVLGSSSEDSRRTSTPAGSE
Clonality	Polyclonal
MW	41kDa
Uniprot ID	P41231
NCBI	NP_788085
Expiration Date	12 months from date of receipt.



Host: Rabbit,
Target Name:
P2RY2,
Sample...



Host: Rabbit,
Target: P2RY2,
Positive co...



WB Suggested
Anti-P2RY2
Antibody,
Titrat...