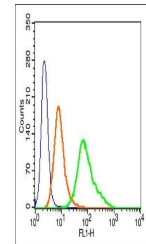


Product Datasheet

c-FOS (phospho-Ser32) antibody (orb5855)

Description	c-FOS (phospho-Ser32) antibody
Species/Host	Rabbit
Reactivity	Human, Rat
Conjugation	Unconjugated
Tested Applications	FC, IHC-P
Immunogen	KLH conjugated Synthesised phosphopeptide derived from human c-Fos around the phosphorylation site of Ser32 (YH(p-S)PA)
Target	Phospho-c-Fos (Ser32)
Preservatives	0.01M TBS(pH7.4) with 1% rAlbumin, 0.03% Proclin300 and 50% Glycerol.
Form/Appearance	Liquid
Concentration	1mg/ml
Storage	Shipped at 4°C. Store at -20 °C for one year. Avoid repeated freeze/thaw cycles.
Note	For research use only
Isotype	IgG
Clonality	Polyclonal
MW	41 kDa
Uniprot ID	P01100
Dilution Range	IHC-P=1:100-500, Flow-Cyt=1µg /Test
Expiration Date	12 months from date of receipt.



Flow cytometric analysis of Hela cells u...