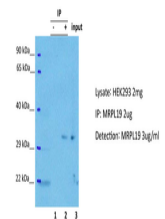


Product Datasheet

MRPL19 antibody (orb585238)

Description	Rabbit polyclonal antibody to MRPL19
Species/Host	Rabbit
Reactivity	Human
Conjugation	Unconjugated
Tested Applications	WB
Target	MRPL19
Preservatives	Liquid. Purified antibody supplied in 1x PBS buffer with 0.09% (w/v) sodium azide and 2% sucrose.
Form/Appearance	Liquid. Purified antibody supplied in 1x PBS buffer with 0.09% (w/v) sodium azide and 2% sucrose.
Concentration	0.5 mg/ml
Storage	Maintain refrigerated at 2-8°C for up to 2 weeks. For long term storage store at -20°C in small aliquots to prevent freeze-thaw cycles.
Note	For research use only
Protein Sequence	Synthetic peptide located within the following region: IRFDLCLTEQQMKEAQKWNQPWLEFDMMREYDTSKIEAAIWKEIEASKRS
Clonality	Polyclonal
MW	33kDa
Uniprot ID	P49406
NCBI	NP_055578
Expiration Date	12 months from date of receipt.



MRPL19 was immunoprecipitated from 2 mg ...



WB Suggested Anti-MRPL19 Antibody, Titra...