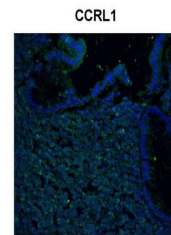


Product Datasheet

CCRL1 antibody (orb585220)

Description	Rabbit polyclonal antibody to CCRL1
Species/Host	Rabbit
Reactivity	Human
Conjugation	Unconjugated
Tested Applications	IHC, WB
Target	ACKR4
Preservatives	Liquid. Purified antibody supplied in 1x PBS buffer with 0.09% (w/v) sodium azide and 2% sucrose.
Form/Appearance	Liquid. Purified antibody supplied in 1x PBS buffer with 0.09% (w/v) sodium azide and 2% sucrose.
Concentration	0.5 mg/ml
Storage	Maintain refrigerated at 2-8°C for up to 2 weeks. For long term storage store at -20°C in small aliquots to prevent freeze-thaw cycles.
Note	For research use only
Protein Sequence	Synthetic peptide located within the following region: SIALFHSLNPILYVFMGASFKNYVMKVAKKYGSWRRQRQSVVEEFPDSE
Clonality	Polyclonal
MW	39kDa
Uniprot ID	Q9NPB9
NCBI	NP_057641
Expiration Date	12 months from date of receipt.



Sample Type:
human colon
tissues
infecte...



CCRL1 antibody
- C-terminal
region (orb5...