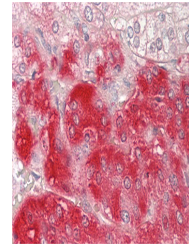


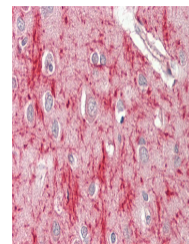
Product Datasheet

MSRB3 antibody (orb585151)

Description	Rabbit polyclonal antibody to MSRB3
Species/Host	Rabbit
Conjugation	Unconjugated
Tested Applications	IHC
Immunogen	The immunogen is a synthetic peptide directed towards the following sequence ESAFEGEYTHHKDPGIYKCVVCGTPLFKSETKFDSGSGWPSFHDVINSEA
Target	MSRB3
Preservatives	Liquid. Purified antibody supplied in 1x PBS buffer with 0.09% (w/v) sodium azide and 2% sucrose.
Form/Appearance	Liquid. Purified antibody supplied in 1x PBS buffer with 0.09% (w/v) sodium azide and 2% sucrose.
Concentration	0.5 mg/ml
Storage	Maintain refrigerated at 2-8°C for up to 2 weeks. For long term storage store at -20°C in small aliquots to prevent freeze-thaw cycles.
Note	For research use only
Protein Sequence	Synthetic peptide located within the following region: ESAFEGEYTHHKDPGIYKCVVCGTPLFKSETKFDSGSGWPSFHDVINSEA
Clonality	Polyclonal
MW	21 kDa
Uniprot ID	Q8IXL7
NCBI	NP_932346
Expiration Date	12 months from date of receipt.



Rabbit Anti-MSRB3 antibody, Formalin Fix...



Rabbit Anti-MSRB3 antibody, Formalin Fix...